

SOIL TYPE BOUNDARIES DERIVED FROM "SOIL SURVEY OF HILLSBOROUGH COUNTY, NEW HAMPSHIRE, 1984" MAP A, HILLSBOROUGH COUNTY, NEW HAMPSHIRE, 1984, SHEET 30.

149C - 8 TO 15% SLOPES (GROUP 2)
78C - MARLOW LOAM, 8 TO 15% SLOPES (GROUP 3)
78D - MARLOW LOAM, 15 TO 25% SLOPES (GROUP 3)
77C - MARLOW STONY LOAM, 8 TO 15% SLOPES (GROUP 3)
160B - MARLOW STONY LOAM, 15 TO 25% SLOPES (GROUP 3)
160C - MARLOW STONY LOAM, 15 TO 25% SLOPES (GROUP 3)
161C - LAMAR-TURNBROOK ROCK OUTCROP COMPLEX, 3 TO 15% SLOPES (GROUP 4)

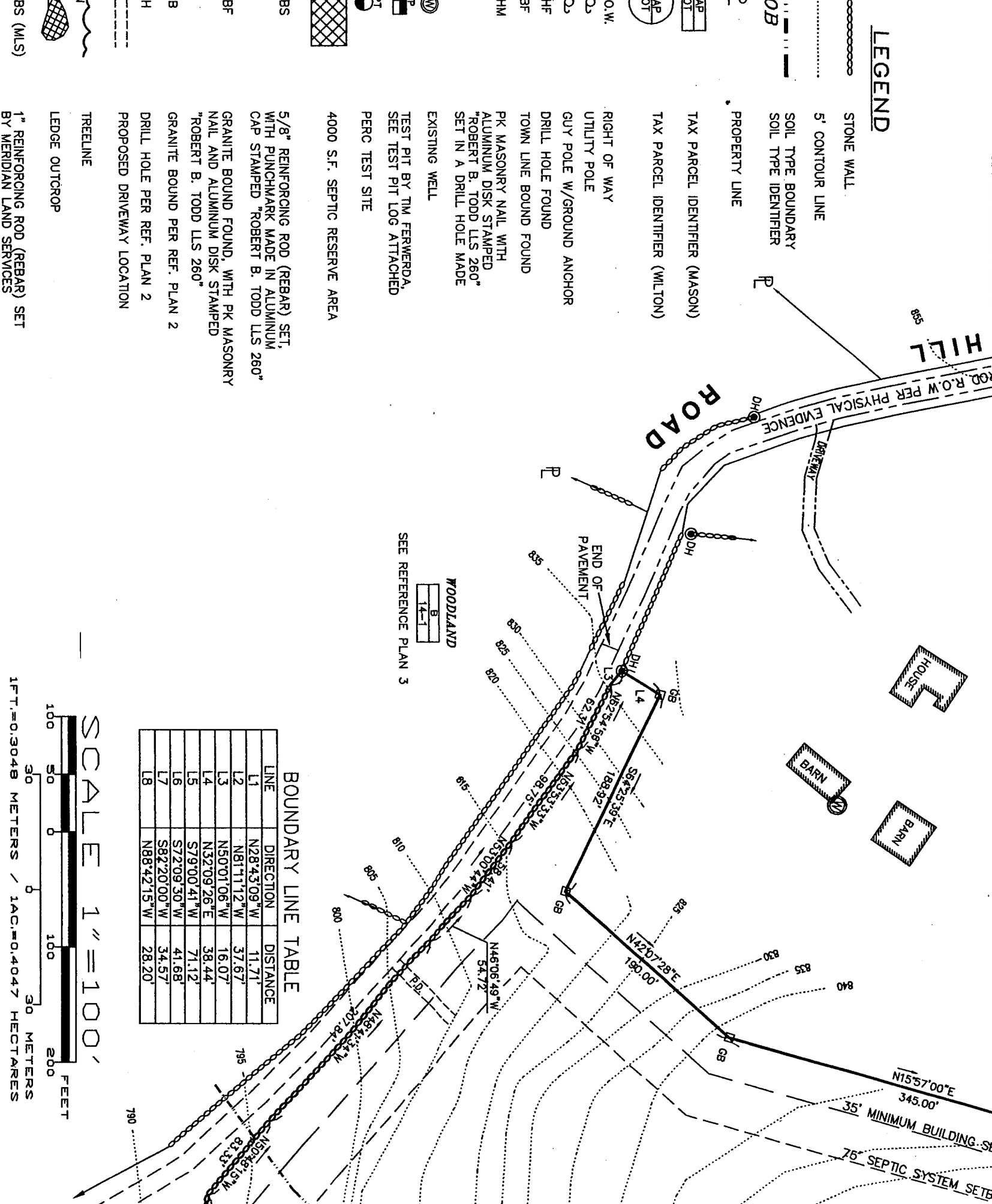
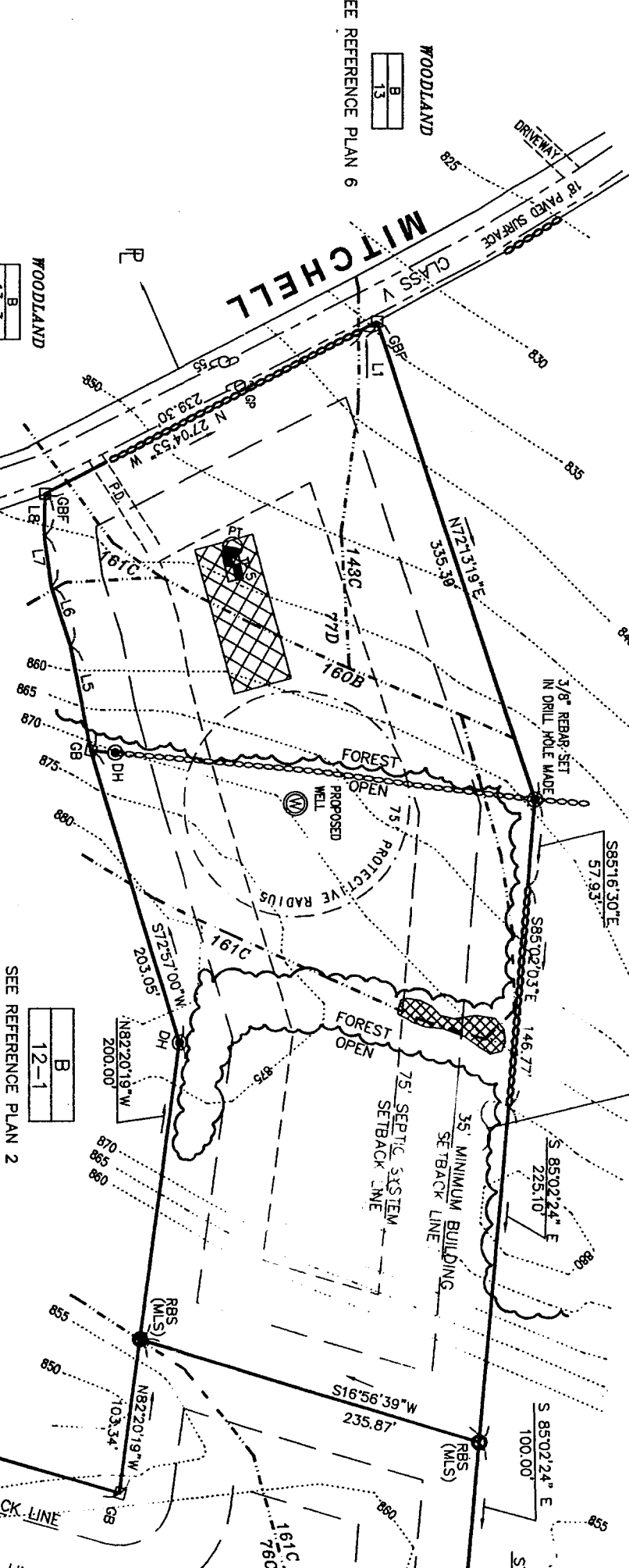
PREFERENCE PLANS

- HCOB PLAN NO. 20598 "LOT LINE ADJUSTMENT AND SUBDIVISION PLAT LANDS OF MARSHA L. FOSTER, TRUSTEE, MAP B, LOTS 11 & 12-2, MASON, N.H.," DATED DECEMBER 6, 1999 AND LAST REVISED 4/16/04 BY THIS OFFICE.
- HCOB PLAN NO. 22089 "SUBDIVISION PLAT LAND OF ALAN AND MARSHA FOSTER, MASON, N.H.," DATED JANUARY 15, 1999 AND LAST REVISED APRIL 11, 1999 BY THIS OFFICE.
- HCOB PLAN NO. 33187 "LOT LINE ADJUSTMENT AND SUBDIVISION PLAT LANDS OF MARSHA L. FOSTER, TRUSTEE, MAP B, LOTS 14-1 & 14-2, MASON, N.H.," DATED JANUARY 22, 2004 AND LAST REVISED 4/16/04 BY THIS OFFICE.
- HCOB PLAN NO. 27820 "SUBDIVISION PLAT, MAP H LOT 89, WILTON, N.H.," PREPARED FOR ALAN STEVENS & BRAY EDWARDS, DATED SEPTEMBER 12, 1995 BY DUAL SURVEY, INC.
- HCOB PLAN NO. 28384 "CONSOLIDATION, LOT LINE REVISION & RELOCATION PLAN, WILTON, NEW HAMPSHIRE, PREPARED FOR JOHN W. YIROCK, JR., STEPHEN P. YIROCK, MARK H. WHITEHILL & THE BOARD OF DIRECTORS OF N.H. FORESTS, DATED 10 JULY 1998 AND LAST REVISED 9/4/98 BY HOWARD C. WATKINS.
- HCOB PLAN NO. 23935 "SUBDIVISION PLAT LAND OF ALAN & MARSHA FOSTER, MASON, NEW HAMPSHIRE, DATED JUNE 1, 1992 AND LAST REVISED 8/11/92 BY MERIDIAN LAND SERVICES, INC.
- HCOB PLAN NO. 31704 "SUBDIVISION PLAT PREPARED FOR JONES CROSSING ESTATES SUBDIVISION, INC. AND JAMES L. HARRIS, DATED SET 1, 10, 2001 AND LAST REVISED 11 APRIL 2002 BY PROMISED LAND SURVEY, LLC.
- HCOB PLAN NO. 32226 "RESIDENTIAL, SUBDIVISION, MASON, N.H.," MAP B LOT 15-1" DATED OCT. 2002 BY PROMISED LAND SURVEY, LLC.
- HCOB PLAN NO. 27366 "SUBDIVISION PLAT OF LAND, ESTATE OF EDNA B. STEPHENS, WILTON, N.H.," DATED OCTOBER 19, 1994 AND REVISED 12/21/94 BY MERIDIAN LAND SERVICES, INC.
- TOWN OF MASON ASSESSOR'S MAP SHEET B.
- TOWN OF WILTON ASSESSOR'S MAP SHEET H.

LOT FRONTAGE TABLE	
PROPOSED LOT	PROPOSED FRONTAGE
12-2 (44.93)	581.43'
12-2-1	251.01'

PROPOSED LOT	
12-2-1	165,442 S.F.
B	3,798 AC.
ALL DRY LAND	

EXISTING LOT	
12-2	1,997,533 S.F.
B	44,939 AC.
PROPOSED AREA	
1,792,091 S.F.	41,141 AC.



BOUNDARY LINE TABLE	
LINE	DIRECTION
1	N 68° 11' 12\"/>
2	N 68° 11' 12\"/>
3	N 68° 11' 12\"/>
4	N 68° 11' 12\"/>
5	N 68° 11' 12\"/>
6	N 68° 11' 12\"/>
7	N 68° 11' 12\"/>
8	N 68° 11' 12\"/>
9	N 68° 11' 12\"/>
10	N 68° 11' 12\"/>
11	N 68° 11' 12\"/>
12	N 68° 11' 12\"/>
13	N 68° 11' 12\"/>
14	N 68° 11' 12\"/>
15	N 68° 11' 12\"/>
16	N 68° 11' 12\"/>
17	N 68° 11' 12\"/>
18	N 68° 11' 12\"/>

BOUNDARY LINE TABLE	
LINE	DIRECTION
1	N 68° 11' 12\"/>
2	N 68° 11' 12\"/>
3	N 68° 11' 12\"/>
4	N 68° 11' 12\"/>
5	N 68° 11' 12\"/>
6	N 68° 11' 12\"/>
7	N 68° 11' 12\"/>
8	N 68° 11' 12\"/>
9	N 68° 11' 12\"/>
10	N 68° 11' 12\"/>
11	N 68° 11' 12\"/>
12	N 68° 11' 12\"/>
13	N 68° 11' 12\"/>
14	N 68° 11' 12\"/>
15	N 68° 11' 12\"/>
16	N 68° 11' 12\"/>
17	N 68° 11' 12\"/>
18	N 68° 11' 12\"/>

BOUNDARY LINE TABLE	
LINE	DIRECTION
1	N 68° 11' 12\"/>
2	N 68° 11' 12\"/>
3	N 68° 11' 12\"/>
4	N 68° 11' 12\"/>
5	N 68° 11' 12\"/>
6	N 68° 11' 12\"/>
7	N 68° 11' 12\"/>
8	N 68° 11' 12\"/>
9	N 68° 11' 12\"/>
10	N 68° 11' 12\"/>
11	N 68° 11' 12\"/>
12	N 68° 11' 12\"/>
13	N 68° 11' 12\"/>
14	N 68° 11' 12\"/>
15	N 68° 11' 12\"/>
16	N 68° 11' 12\"/>
17	N 68° 11' 12\"/>
18	N 68° 11' 12\"/>

BOUNDARY LINE TABLE	
LINE	DIRECTION
1	N 68° 11' 12\"/>
2	N 68° 11' 12\"/>
3	N 68° 11' 12\"/>
4	N 68° 11' 12\"/>
5	N 68° 11' 12\"/>
6	N 68° 11' 12\"/>
7	N 68° 11' 12\"/>
8	N 68° 11' 12\"/>
9	N 68° 11' 12\"/>
10	N 68° 11' 12\"/>
11	N 68° 11' 12\"/>
12	N 68° 11' 12\"/>
13	N 68° 11' 12\"/>
14	N 68° 11' 12\"/>
15	N 68° 11' 12\"/>
16	N 68° 11' 12\"/>
17	N 68° 11' 12\"/>
18	N 68° 11' 12\"/>

BOUNDARY LINE TABLE	
LINE	DIRECTION
1	N 68° 11' 12\"/>
2	N 68° 11' 12\"/>
3	N 68° 11' 12\"/>
4	N 68° 11' 12\"/>
5	N 68° 11' 12\"/>
6	N 68° 11' 12\"/>
7	N 68° 11' 12\"/>
8	N 68° 11' 12\"/>
9	N 68° 11' 12\"/>
10	N 68° 11' 12\"/>
11	N 68° 11' 12\"/>
12	N 68° 11' 12\"/>
13	N 68° 11' 12\"/>
14	N 68° 11' 12\"/>
15	N 68° 11' 12\"/>
16	N 68° 11' 12\"/>
17	N 68° 11' 12\"/>
18	N 68° 11' 12\"/>

BOUNDARY LINE TABLE	
LINE	DIRECTION
1	N 68° 11' 12\"/>
2	N 68° 11' 12\"/>
3	N 68° 11' 12\"/>
4	N 68° 11' 12\"/>
5	N 68° 11' 12\"/>
6	N 68° 11' 12\"/>
7	N 68° 11' 12\"/>
8	N 68° 11' 12\"/>
9	N 68° 11' 12\"/>
10	N 68° 11' 12\"/>
11	N 68° 11' 12\"/>
12	N 68° 11' 12\"/>
13	N 68° 11' 12\"/>
14	N 68° 11' 12\"/>
15	N 68° 11' 12\"/>
16	N 68° 11' 12\"/>
17	N 68° 11' 12\"/>
18	N 68° 11' 12\"/>

BOUNDARY LINE TABLE	
LINE	DIRECTION
1	N 68° 11' 12\"/>
2	N 68° 11' 12\"/>
3	N 68° 11' 12\"/>
4	N 68° 11' 12\"/>
5	N 68° 11' 12\"/>
6	N 68° 11' 12\"/>
7	N 68° 11' 12\"/>
8	N 68° 11' 12\"/>
9	N 68° 11' 12\"/>
10	N 68° 11' 12\"/>
11	N 68° 11' 12\"/>
12	N 68° 11' 12\"/>
13	N 68° 11' 12\"/>
14	N 68° 11' 12\"/>
15	N 68° 11' 12\"/>
16	N 68° 11' 12\"/>
17	N 68° 11' 12\"/>
18	N 68° 11' 12\"/>

BOUNDARY LINE TABLE	
LINE	DIRECTION
1	N 68° 11' 12\"/>
2	N 68° 11' 12\"/>
3	N 68° 11' 12\"/>
4	N 68° 11' 12\"/>
5	N 68° 11' 12\"/>
6	N 68° 11' 12\"/>
7	N 68° 11' 12\"/>
8	N 68° 11' 12\"/>
9	N 68° 11' 12\"/>
10	N 68° 11' 12\"/>
11	N 68° 11' 12\"/>
12	N 68° 11' 12\"/>
13	N 68° 11' 12\"/>
14	N 68° 11' 12\"/>
15	N 68° 11' 12\"/>
16	N 68° 11' 12\"/>
17	N 68° 11' 12\"/>
18	N 68° 11' 12\"/>

BOUNDARY LINE TABLE	
LINE	DIRECTION
1	N 68° 11' 12\"/>
2	N 68° 11' 12\"/>
3	N 68° 11' 12\"/>
4	N 68° 11' 12\"/>
5	N 68° 11' 12\"/>
6	N 68° 11' 12\"/>
7	N 68° 11' 12\"/>
8	N 68° 11' 12\"/>
9	N 68° 11' 12\"/>
10	N 68° 11' 12\"/>
11	N 68° 11' 12\"/>
12	N 68° 11' 12\"/>
13	N 68° 11' 12\"/>
14	N 68° 11' 12\"/>
15	N 68° 11' 12\"/>
16	N 68° 11' 12\"/>
17	N 68° 11' 12\"/>
18	N 68° 11' 12\"/>

BOUNDARY LINE TABLE	
LINE	DIRECTION
1	N 68° 11' 12\"/>
2	N 68° 11' 12\"/>
3	N 68° 11' 12\"/>
4	N 68° 11' 12\"/>
5	N 68° 11' 12\"/>
6	N 68° 11' 12\"/>
7	N 68° 11' 12\"/>
8	N 68° 11' 12\"/>
9	N 68° 11' 12\"/>
10	N 68° 11' 12\"/>
11	N 68° 11' 12\"/>
12	N 68° 11' 12\"/>
13	N 68° 11' 12\"/>
14	N 68° 11' 12\"/>
15	N 68° 11' 12\"/>
16	N 68° 11' 12\"/>
17	N 68° 11' 12\"/>
18	N 68° 11' 12\"/>

BOUNDARY LINE TABLE	
LINE	DIRECTION
1	N 68° 11' 12\"/>
2	N 68° 11' 12\"/>
3	N 68° 11' 12\"/>
4	N 68° 11' 12\"/>
5	N 68° 11' 12\"/>
6	N 68° 11' 12\"/>
7	N 68° 11' 12\"/>
8	N 68° 11' 12\"/>
9	N 68° 11' 12\"/>
10	N 68° 11' 12\"/>
11	N 68° 11' 12\"/>
12	N 68° 11' 12\"/>
13	N 68° 11' 12\"/>
14	N 68° 11' 12\"/>
15	N 68° 11' 12\"/>
16	N 68° 11' 12\"/>
17	N 68° 11' 12\"/>
18	N 68° 11' 12\"/>

BOUNDARY LINE TABLE	
LINE	DIRECTION
1	N 68° 11' 12\"/>
2	N 68° 11' 12\"/>
3	N 68° 11' 12\"/>
4	N 68° 11' 12\"/>
5	N 68° 11' 12\"/>
6	N 68° 11' 12\"/>
7	N 68° 11' 12\"/>
8	N 68° 11' 12\"/>
9	N 68° 11' 12\"/>
10	N 68° 11' 12\"/>
11	N 68° 11' 12\"/>
12	N 68° 11' 12\"/>
13	N 68° 11' 12\"/>
14	N 68° 11' 12\"/>
15	N 68° 11' 12\"/>
16	N 68° 11' 12\"/>
17	N 68° 11' 12\"/>
18	N 68° 11' 12\"/>

BOUNDARY LINE TABLE	
LINE	DIRECTION
1	N 68° 11' 12\"/>
2	N 68° 11' 12\"/>
3	N 68° 11' 12\"/>
4	N 68° 11' 12\"/>
5	N 68° 11' 12\"/>
6	N 68° 11' 12\"/>
7	N 68° 11' 12\"/>
8	N 68° 11' 12\"/>
9	N 68° 11' 12\"/>
10	N 68° 11' 12\"/>
11	N 68° 11' 12\"/>
12	N 68° 11' 12\"/>
13	N 68° 11' 12\"/>
14	N 68° 11' 12\"/>
15	N 68° 11' 12\"/>
16	N 68° 11' 12\"/>
17	N 68° 11' 12\"/>
18	N 68° 11' 12\"/>

BOUNDARY LINE TABLE	
LINE	DIRECTION
1	N 68° 11' 12\"/>
2	N 68° 11' 12\"/>
3	N 68° 11' 12\"/>
4	N 68° 11' 12\"/>
5	N 68° 11' 12\"/>
6	N 68° 11' 12\"/>
7	N 68° 11' 12\"/>
8	N 68° 11' 12\"/>
9	N 68° 11' 12\"/>
10	N 68° 11' 12\"/>
11	N 68° 11' 12\"/>
12	N 68° 11' 12\"/>
13	N 68° 11' 12\"/>
14	N 68° 11' 12\"/>
15	N 68° 11' 12\"/>
16	N 68° 11' 12\"/>
17	N 68° 11' 12\"/>
18	N 68° 11' 12\"/>

BOUNDARY LINE TABLE	
LINE	DIRECTION
1	N 68° 11' 12\"/>
2	N 68° 11' 12\"/>
3	N 68° 11' 12\"/>
4	N 68° 11' 12\"/>
5	N 68° 11' 12\"/>
6	N 68° 11' 12\"/>
7	N 68° 11' 12\"/>
8	N 68° 11' 12\"/>
9	N 68° 11' 12\"/>
10	N 68° 11' 12\"/>
11	N 68° 11' 12\"/>
12	N 68° 11' 12\"/>
13	N 68° 11' 12\"/>
14	N 68° 11' 12\"/>
15	N 68° 11' 12\"/>
16	N 68° 11' 12\"/>
17	N 68° 11' 12\"/>
18	N 68° 11' 12\"/>

BOUNDARY LINE TABLE	
LINE	DIRECTION
1	N 68° 11' 12\"/>
2	N 68° 11' 12\"/>
3	N 68° 11' 12\"/>
4	N 68° 11' 12\"/>
5	N 68° 11' 12\"/>
6	N 68° 11' 12\"/>
7	N 68° 11' 12\"/>
8	N 68° 11' 12\"/>
9	N 68° 11' 12\"/>
10	N 68° 11' 12\"/>
11	N 68° 11' 12\"/>
12	N 68° 11' 12\"/>
13	N 68° 11' 12\"/>
14	N 68° 11' 12\"/>
15	N 68° 11' 12\"/>
16	N 68° 11' 12\"/>
17	N 68° 11' 12\"/>
18	N 68° 11' 12\"/>

BOUNDARY LINE TABLE	
LINE	DIRECTION
1	N 68° 11' 12\"/>
2	N 68° 11' 12\"/>
3	N 68° 11' 12\"/>
4	N 68° 11' 12\"/>
5	N 68° 11' 12\"/>
6	N 68° 11' 12\"/>
7	N 68° 11' 12\"/>
8	N 68° 11' 12\"/>
9	N 68° 11' 12\"/>
10	N 68° 11' 12\"/>
11	N 68° 11' 12\"/>
12	N 68° 11' 12\"/>
13	N 68° 11' 12\"/>
14	N 68° 11' 12\"/>
15	N 68° 11' 12\"/>
16	N 68° 11' 12\"/>
17	N 68° 11' 12\"/>
18	N 68° 11' 12\"/>

BOUNDARY LINE TABLE	
LINE	DIRECTION
1	N 68° 11' 12\"/>
2	N 68° 11' 12\"/>
3	N 68° 11' 12\"/>
4	N 68° 11' 12\"/>
5	N 68° 11' 12\"/>
6	N 68° 11' 12\"/>
7	N 68° 11' 12\"/>
8	N 68° 11' 12\"/>
9	N 68° 11' 12\"/>
10	N 68° 11' 12\"/>
11	N 68° 11' 12\"/>
12	N 68° 11' 12\"/>
13	N 68° 11' 12\"/>
14	N 68° 11